



LUXE-LINE TWIN and SINGLE bespoke doors for your home

LUXE-LINE TWIN: Insulated hinged double leaf door

LUXE-LINE SINGLE: Insulated hinged single leaf door

Design, insulation and ease of use

The introduction of the Luxe-Line Twin and Single has extended the range of garage doors enormously. The Luxe-Line Twin is THE perfect hinged double leaf door.

The Luxe-Line-Single is a hinged single leaf door that combines perfectly with, for instance, your garage door. Of course, both types of Luxe-Line doors are made to specification

and are in line with your personal wishes. The three most important aspects of the

Luxe-Line Twin and Single are: **DESIGN, INSULATION and EASE OF USE**

DESIGN

The Luxe-Line Twin has the appearance of a traditional wooden side hinged door, without the disadvantages. The Luxe-Line door will blend in with the character of your house due to the wide range of choices regarding styling and colours. The design of the Luxe-Line Single and Twin can be completely adapted to your wishes. The possibilities with respect to colour and materials are almost unlimited. Moreover, every Luxe-Line door is made to measure, specially for you from durable materials, such as aluminium and high-quality galvanised steel. As a result, your Luxe-Line door requires more or less no maintenance.

INSULATION

The insulation and effective seals of your garage door help to prevent unnecessary heat loss, draught and conden-

sation. To achieve this, the 53-mm high-quality aluminium profiles are thermally separated by a plastic strip, ensuring that there is no possibility of condensation. The 40-mm steel sandwich panels offer optimum insulation, which keeps out the cold. The rubber sealing profiles provide a perfect seal and make your Luxe-Line more or less draught proof.

EASE OF USE

You decide on which side you want the pass door. If desired, you can order the Luxe-Line Twin with asymmetrical door leaves for an even larger entrance. The pass door is fitted as standard with door handles and a cylinder lock, the fixed leaf is fitted with two sliding locks. If needed, you can of course open both leaves. The low aluminium threshold (6mm) allows you to easily enter and exit the garage with your bicycle or motorcycle. For your security the Luxe-Line Twin can be fitted with a THREE point security lock.





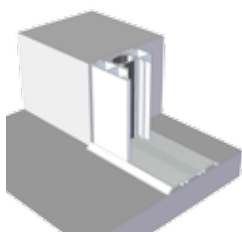
Stability as the starting point

The installation profiles, which have been specially developed for the Luxe-Line door, offer an optimum solution for any installation situation. These installation profiles finish the Luxe-Line door **PERFECTLY** on the inside.

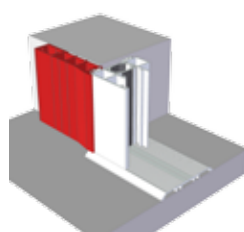
The rubber profiles give a perfect seal. Every Luxe-Line door is supplied as standard with a pre-installed low threshold.

This is because stability is the starting point.

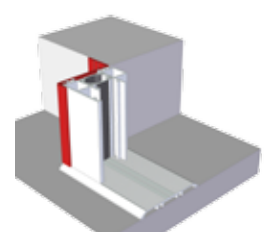
Three installation options. Always a perfect and accurate installation.



A: Installation through the doorframe



B: Installation profile in the facade



C: Installation profile behind the facade

Luxe-Line Single - appearance and convenience

The Luxe-Line Single is a hinged single leaf door that combines perfectly with your garage door.

If the facade is large enough, you can install the Luxe-Line Single next to your garage door.

PERFECT TO SPECIFICATION

This is a good, but especially an attractive solution if you prefer not to open or close the entire garage door when entering or leaving the garage. It goes without saying that, because the same materials are used, the Luxe-Line Single has exactly the same appearance as your garage door.

For the Luxe-Line Single, character, insulation and ease of use were also the starting points for the design. You can choose from a large range of panels, just as you can for the

Luxe-Line Twin. The same thermally separated aluminium profiles that are used for the Luxe-Line Twin are used for the door frame. The accurately finished Luxe-Line Single is perfectly made to your specification.

SECURITY

For your security the Luxe-Line Single can of course be fitted with a THREE point security lock.



Guaranteed to radiate the right impression

The enormous choice of designs, textures and colours make numerous variations possible. Classical or modern, the Luxe-Line can always be perfectly aligned to your wishes.

DOOR FRAME

The basis of every Luxe-Line is a high-quality aluminium frame, which is as standard POWDER COATED in RAL 9016. The frame is 53 mm thick and thermally separated, which completely eliminates condensation and cold.

FILLING

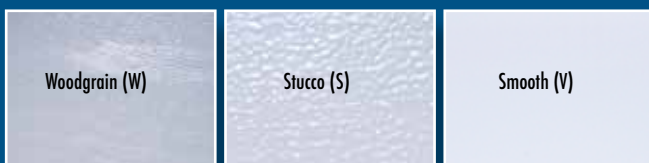
The standard filling for the door frame consists of 40-mm steel sandwich panels. The galvanised panels have a hard foam core and are powder coated as standard in RAL 9016.

It is also possible to install various types of windows in these panels to allow more light to enter. Individual fillings to perfectly align the Luxe-Line to the character of your house are also possible.

The following fillings are available:

HIGH-LINE PANELS

40-mm steel sandwich panels, standard in RAL 9016 with various surface textures and designs.



DESIGN-LINE PANELS

40-mm steel sandwich panels in various colours and surface textures.



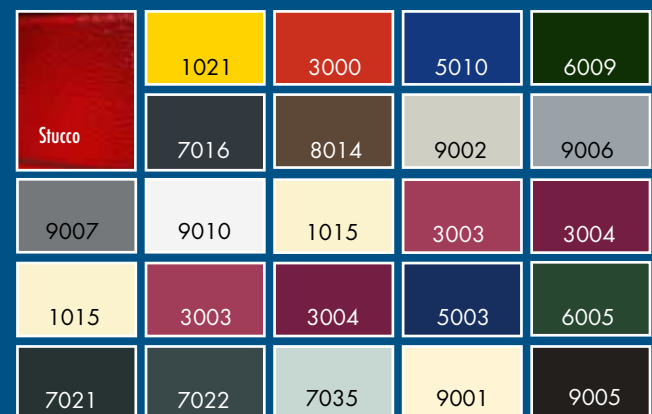
WOOD-LINE PANELS

40-mm steel sandwich panels with a beautiful "wood" look in various designs.



COLOUR LINE STUCCO

40-mm steel sandwich panels in STUCCO with horizontal lining and available in 20 standard colours.



COLOUR

The standard aluminium and powder-coated door frame is supplied in RAL 9016, just like the standard filling, or is supplied with a panel from the Colour Line Stucco series. If a different colour of frame or filling is desired, it can always be supplied at a surcharge. After all, the colour should match the colours used on your house.



Personal wishes

There are many options available to align the Luxe-Line doors to your personal taste and wishes in the area of ease of use.

We are always willing to provide you with advice in order to arrive at the correct make-up of your Luxe-Line door. Whether it concerns design, safety or ease of use, the many options allow the Luxe-Line to be matched to your personal wishes.

Whatever version you choose, we guarantee optimum quality and a long service life.

VARIOUS OPTIONS

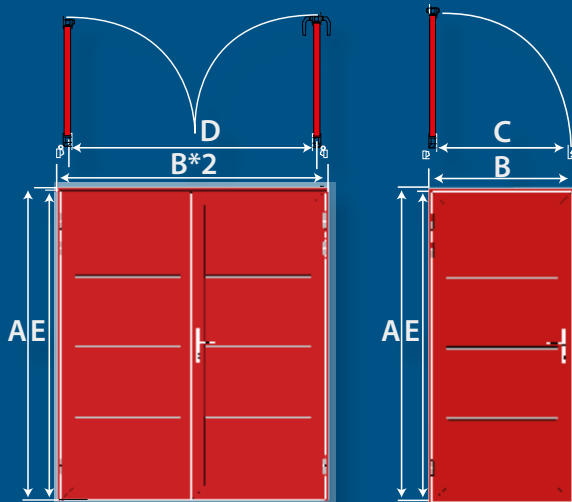
- Individual filling to perfectly match your house (on request)
 - RAL as desired
 - Door-spring
 - Door closer
 - Installation profiles for a perfect finish
 - Various window options
 - Asymmetric door widths (Luxe-Line Twin)
 - Draft excluder for a perfect bottom seal
 - Ventilation grills
- THREE-POINT lock for pass door leave and Single



Technical data

Below is a summary of technical data that can help you make the right choice.

The Luxe-Line Twin and Single doors meet all CE standards.



Dimensions of Luxe-Line Twin and Single

Height of leaf	Width of leaf	
	Double safety glass	Other fillings
A → 2000 mm	B max = 1150 mm	B max = 1350 mm
A → 2300 mm	B max = 1250 mm	B max = 1350 mm
A → 2600 mm	B max = 1250 mm	B max = 1550 mm
Twin Door =	B + B max. = 2000 mm	B + B max. = 3000 mm
C = Clearance width minus 160 mm		
E = Clearance height minus 56 mm		



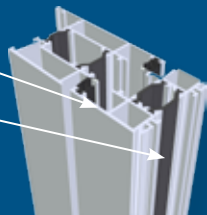
Insulation value of Luxe-Line Twin and Single

Luxe-Line Twin - 2000 x 2300 mm	
Panel filling	0,91 W/m ² k
Double safety glass	2,72 W/m ² k
Luxe-Line Single - 900 x 2300 mm	
Panel filling	1,28 W/m ² k
Double safety glass	2,96 W/m ² k

Choice of various windows

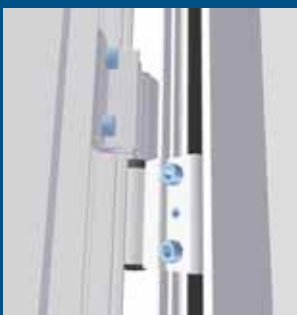


High insulation value, in part thanks to the thermally separated Luxe-Line aluminium profiles.



Choose the level of security that best suits your situation

	Standaard	Paniek	Elektrisch	3-puntsluiting
Euro	✓	✓	✓	✓
KABA	✓	✓	✓	
KESO	✓	✓	✓	
ASSA	✓			



All doors are fitted with adjustable hinges to allow them to be perfectly adjusted.



A doorstop, which can be used to hold your door open in any position, is available as an optional extra.



Our Luxe-Line Single and Twin doors are professionally made to measure. The production processes are fully automated, while retaining flexibility. Accurately programmed machines guarantee exact dimensioning and check the processes to the millimetre. Of course, we only use high-quality materials in our production process.



After all, quality and custom-made solutions are our standard.